

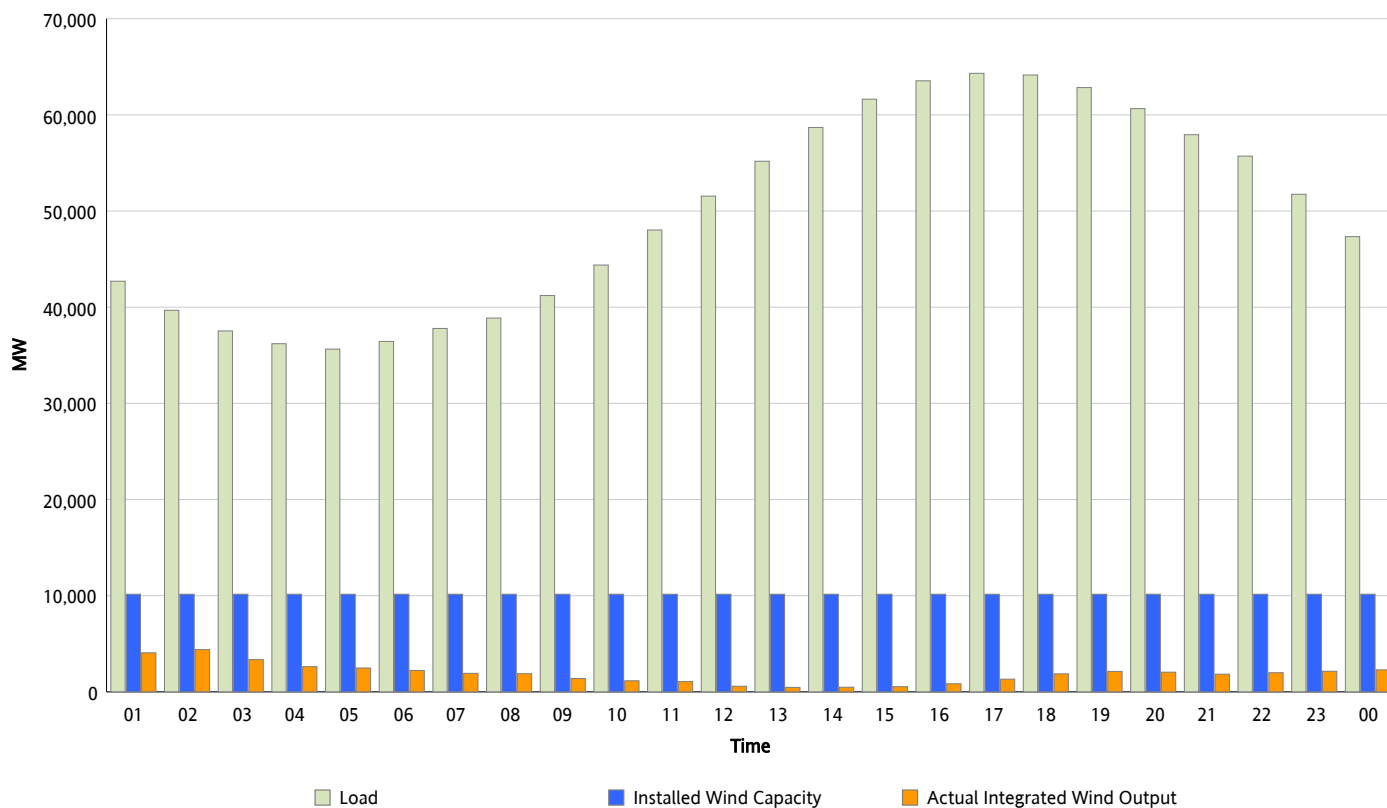


ERCOT Grid Operations

Wind Integration Report : 06/28/2013

Peak Load	64,318 MW
Load Peak Hour (HE)	17
Wind Over Peak	1,319 MW
Wind Record 05/02/13	9,674 MW
Max Wind Value*	4,678 MW
Wind Peak Time	01:30
Wind Integration %	11.84 %

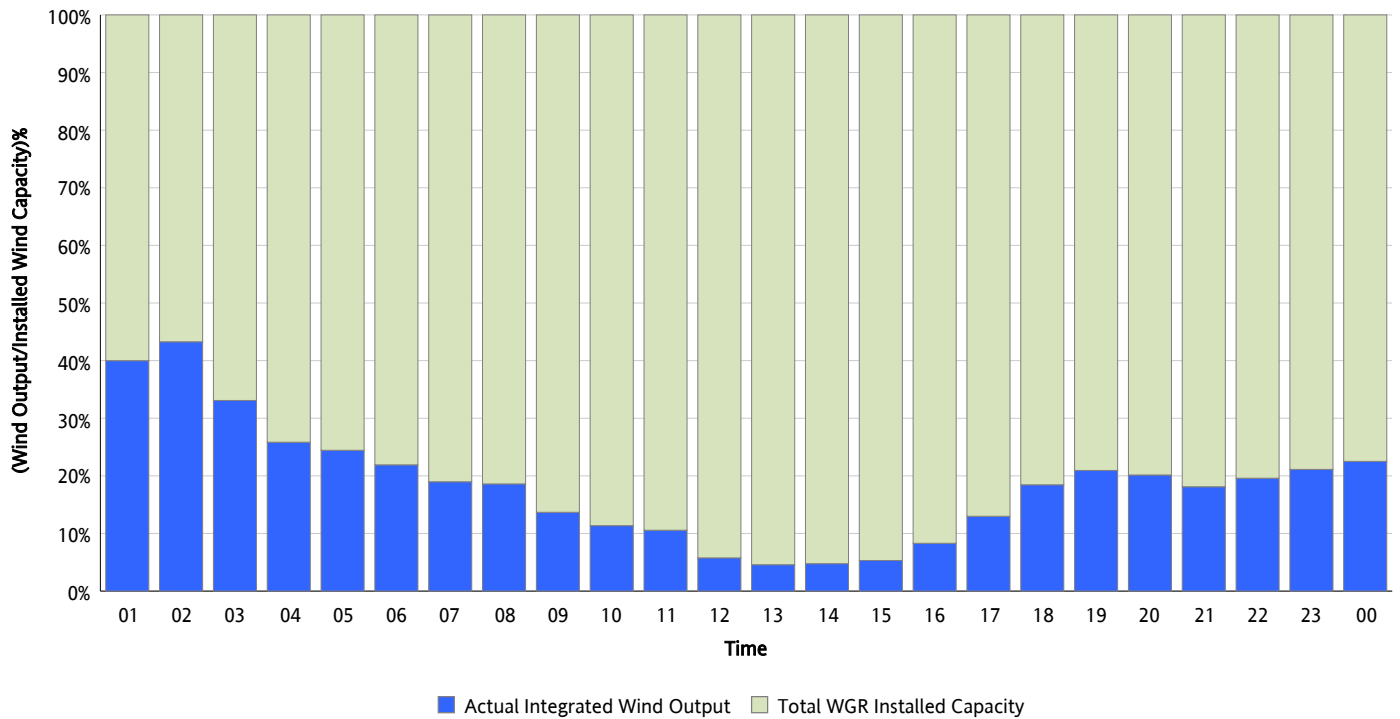
Hourly Average Actual Load vs. Actual Wind Output
06/28/2013



** Wind Record and Wind Max represent instantaneous values and the rest of the values are integrated over the hour*

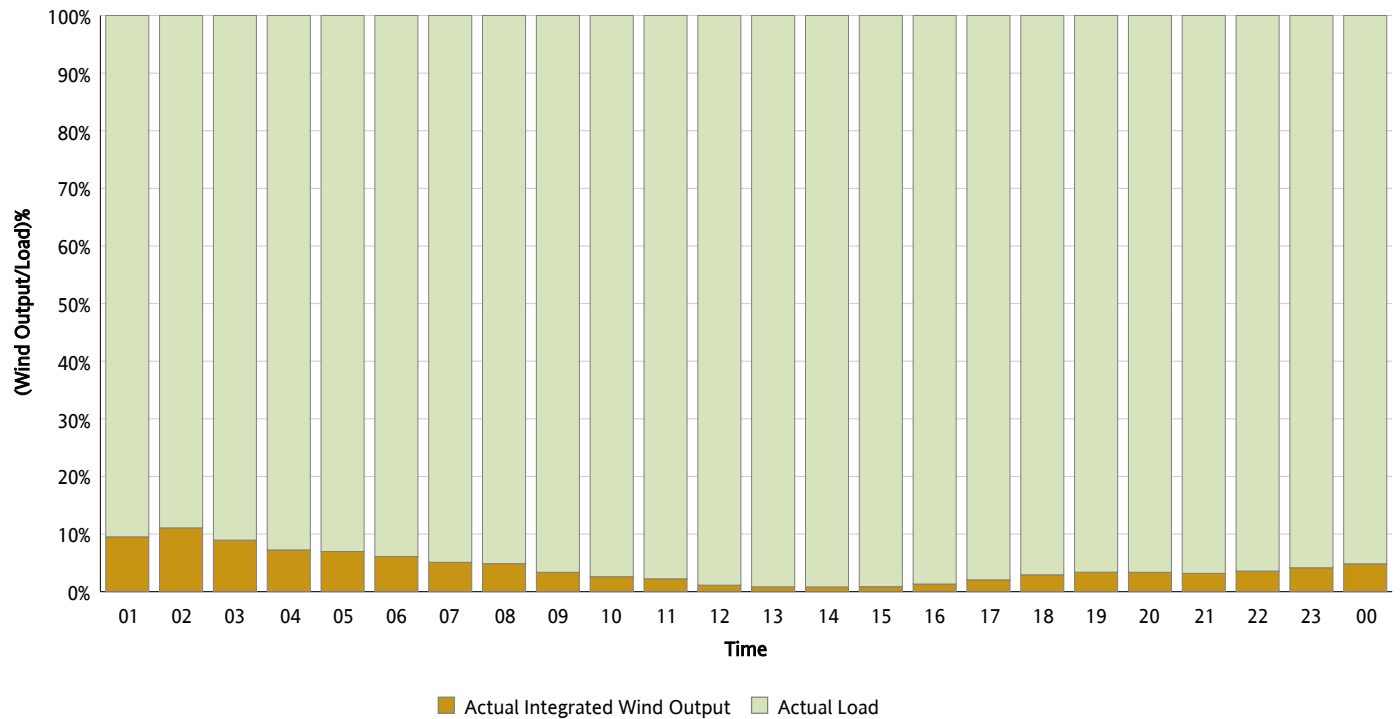
Actual Wind Output as a Percentage of the Total Installed Wind Capacity

06/28/2013



Actual Wind Output as a Percentage of the ERCOT Load

06/28/2013



ERCOT Load vs. Actual Wind Output

06/21/2013 - 06/28/2013

